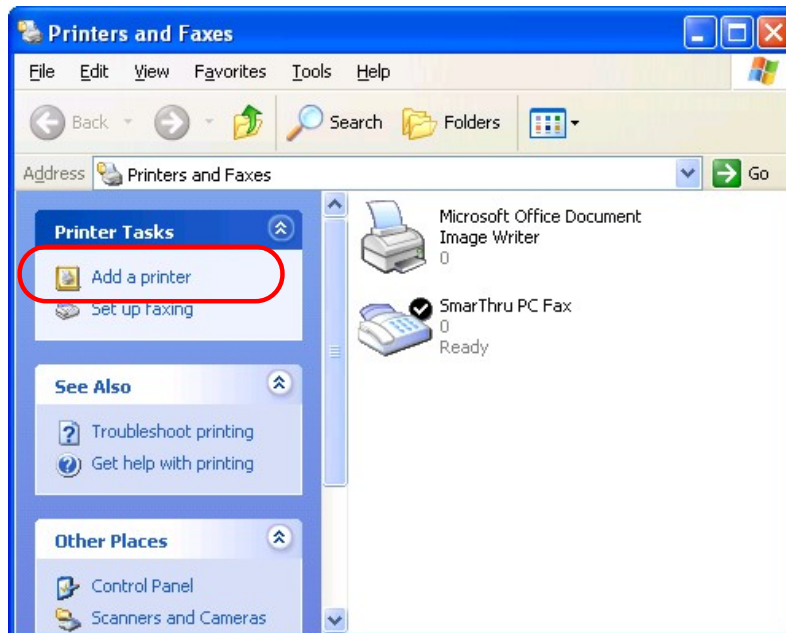


How to install a printer driver

1. Start Settings Printer and Faxes



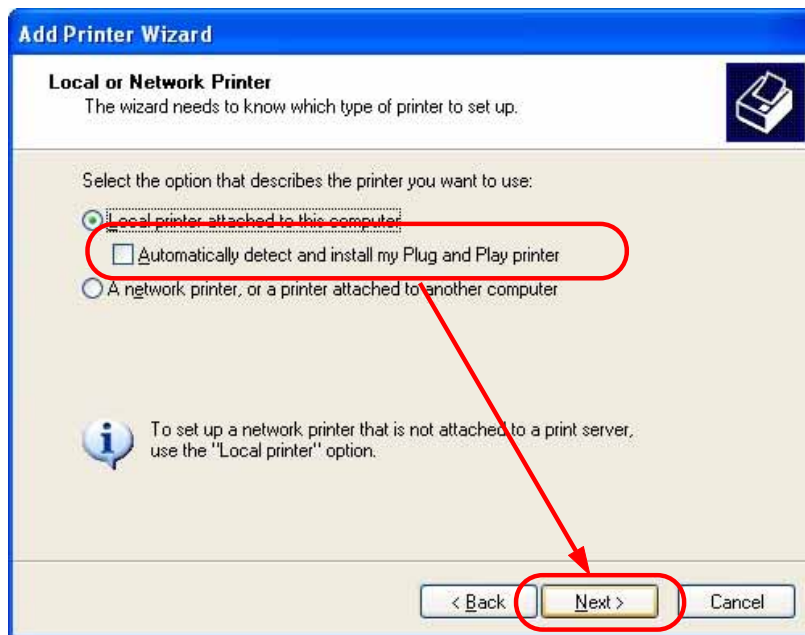
2. Click 'Add a printer'



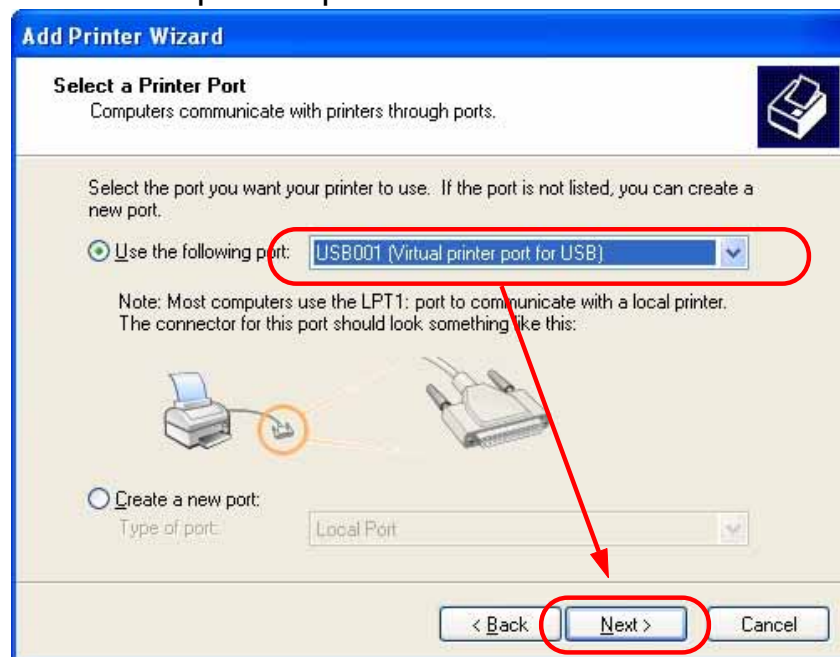
3. Click 'Next'



4. Uncheck the check box and Click 'Next'



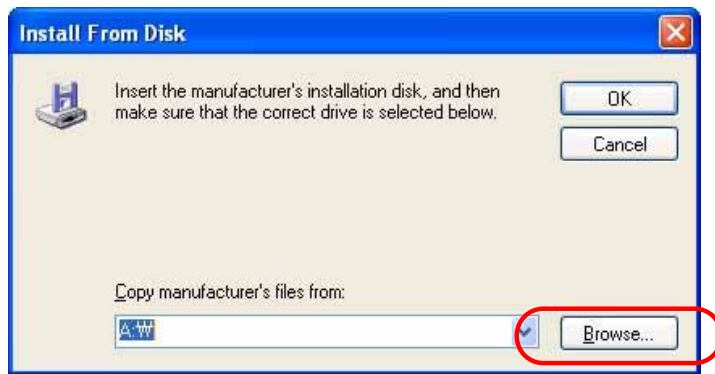
5. Select a printer port and Click 'Next'



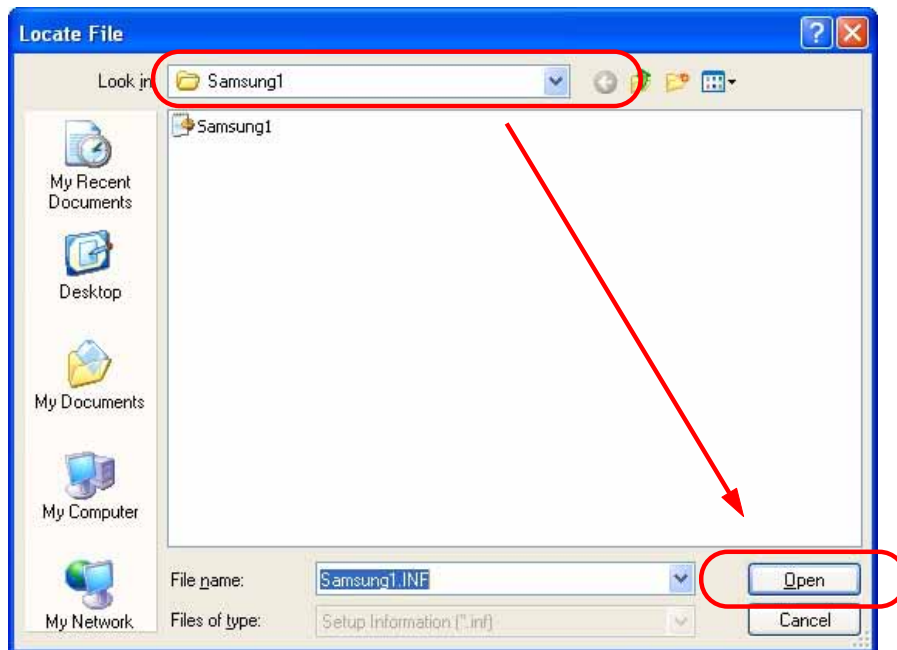
6. Click 'Have Disk'



7. Click 'Browse...'



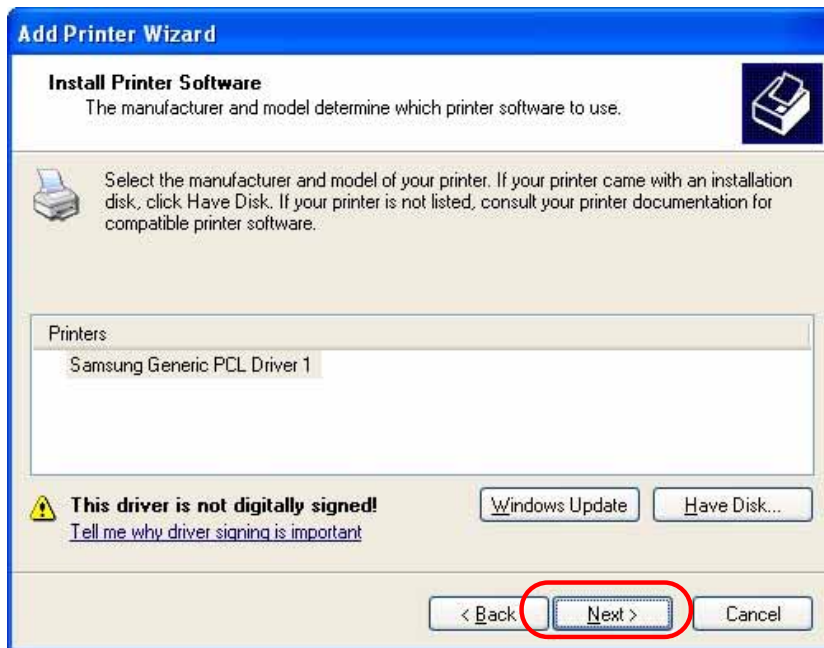
8. Select the extracted driver folder and Click 'Open'



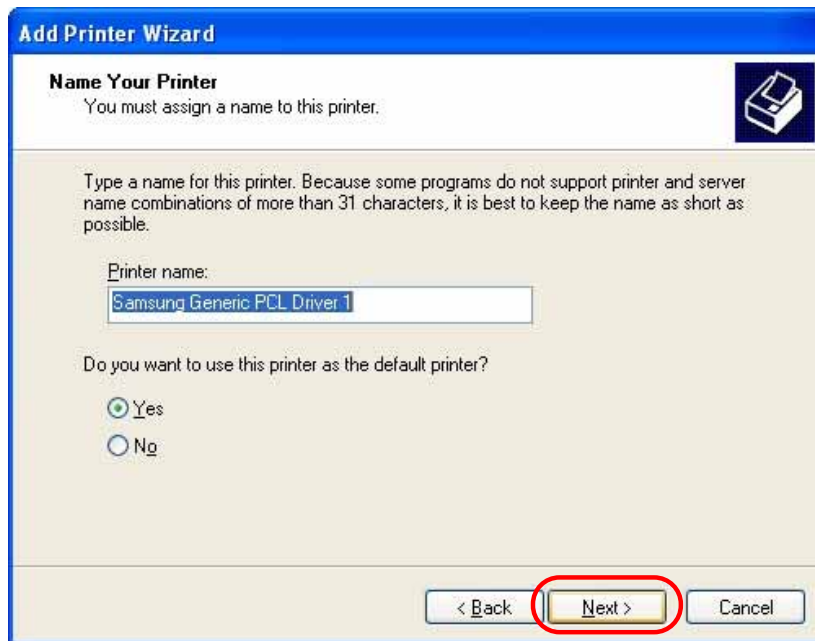
9. Click 'OK'



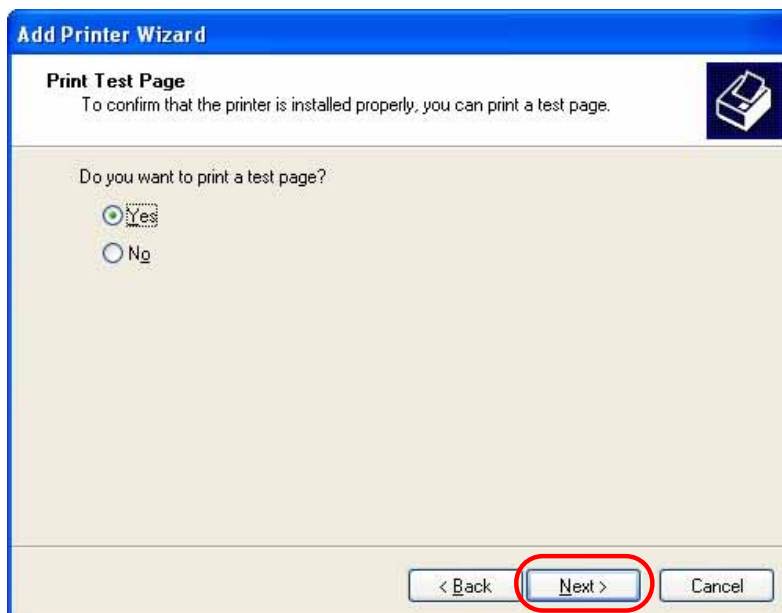
10. Click 'Next'



11. Click 'Next'



12. Click 'Next'



13. Click 'Finish'



14. Click 'Continue Anyway'



15. Printer Driver installation is completed.

